

Dolžina etape: **5.63 km**

Čas hoje: **3 ure**

Zahtevnost: **Lahka**

Opis etape

Naravoslovna pot Azaleja Boštanj je krožna pot, ki na svoji 6 kilometrov dolgi trasi združi za Boštanj in Posavje značilne žlahtnosti narave. Osrednja posebnost poti je rastišče rumenega sleča ali azaleje na gozdnatem griču nad središčem kraja, ki se že od srednjega veka imenuje Gavge. Poleg te botanične naravne vrednote državnega pomena pojasnjevalne table na poti predstavijo še sadjarstvo z avtohtono Sevniško voščenko, čebelarstvo, gozd ter neprecenljivo bogastvo vode, bodisi v obliki številnih studencev kot zlasti z omembo reke Mirne, kjer so nekdanje Boštanjčanke z golimi rokami lovile ribe med njihovim drstenjem. Kar se ni dalo takoj porabiti, so ribe sušile za kasnejšo rabo, iz česar so nastale bogate jedi. Prikaz tega tradicionalnega opravila vam po predhodnem dogovoru pripravijo v okviru društva Azaleja. Ob obisku poti imate možnost nakupa jabolk, medu in proizvodov sadjarstva in medicinarstva. **Geografska navodilo za pot.** Začetek poti je pri Osnovni šoli Boštanj, kjer stoji velika tabla z zemljevidom poti, tu dobite osnovne informacije, osvežilne pijače in prigrizek. Pot vodi v središče naselja Boštanj, kjer se pred župniščem spusti do vodnega izvira pod cerkvijo, ki je bilo včasih boštanjško perišče, imenovano Vejar. Od Vejarja nas v krajši krožni smeri pot pripelje zopet do travnika ob župnijski cerkvi, kjer nas ob zgledno urejenem čebelnjaku opisna tabla seznanja s pomenom sadjarstva in čebelarstva za Boštanj in celotno Posavje, še posebej pa predstavi avtohtono sorto jabolk Sevniško voščenko. Od župnijske cerkve nas pot pelje navkreber mimo pokopališča proti gozdu nad naseljem v smeri jugozahod. Prevzpostopom kolovoza v gozd nas tabla opozori na rastišče Azaleje Pontice, ki je poleg še manjšega rastišča nad Tržiščem edino naravno rastišče te grmovnice v Sloveniji. Skozi gozd po kolovozni poti se povzpnamo do vrha griča, ki se vse od srednjega veka imenuje Gavge, kar priča o tem, da so na tem mestu nekoč stale vislice. Od tu se pot spušča nazaj po drugi strani griča v naselje Boštanj. Ob robu njiv se pot nato skozi grmovje in gozdom poraščen breg spusti do potoka Grahovica in reke Mirne, kjer je nekoč potekal ribolov rib z golimi rokami ter sta ob jezcu obratovali žaga in prva elektrarna na vodni pogon, o čemer spregovori opisna tabla. Pot se od tu naprej nadaljuje skozi Dolenji

Graf vzpona (m)

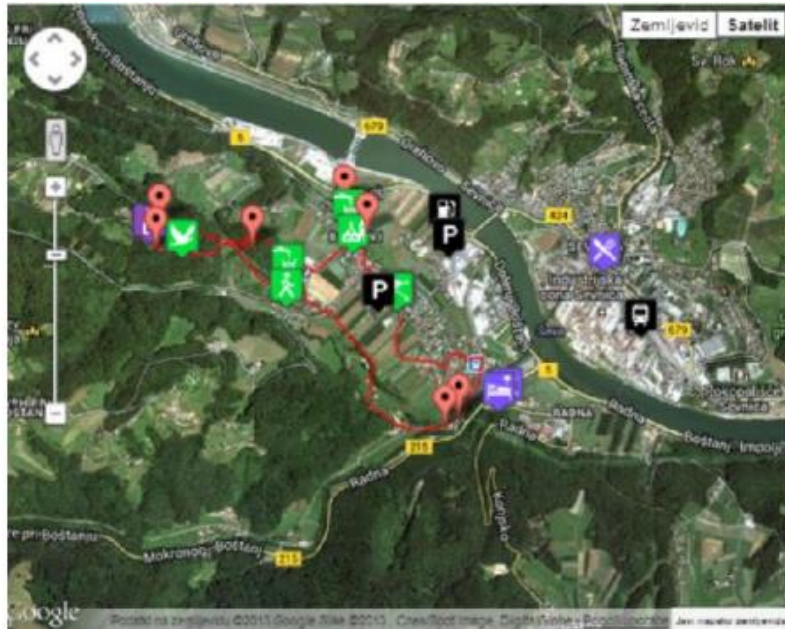


Boštanj in zaključni na začetni točki v Boštanju. Pohod je razgiban, vendar nezahteven.

Po prehojeni poti Azaleja si lahko privoščite kosilo v eni izmed lokalnih gostiln. Popoldan pa predlagamo obisk povsem bližnjega mesta Sevnica, ki ga najbolje prepoznate po mogočnem Gradu Sevnica nad reko Savo. Počitnikovati in se ukvarjati z aktivnostmi v naravi pa je mogoče v okoliških zidanicah, ki ji rezervirate na portalu www.tvz.si

Dodatne informacije

Informacije: Janez Levstik, Krajevna skupnost Boštanj 051/ 636 246, www.doziviljaj.si, doziviljaj@kstm.si



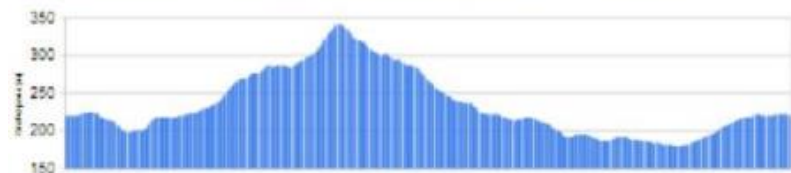
Length: **5.63 km**
Time: **3h**
Difficulty: **Easy**

Tour description

The Azalea Boštanj Nature Trail is a circular trail combining the precious pearls of nature, which are most distinctive of Boštanj and the Lower Sava Valley, along the 6km long hiking trail. The focus of the trail is the habitat of the Yellow Azaleas, which are located on the hill overgrown with forest above the centre of the area, which has been named "Gavge" (gallows) ever since the Middle Ages. In addition to these botanical natural gems of national significance, the information boards also feature information on the fruit-growing activity with the indigenous apple variety called "Sevniška voščenska", bee-keeping activity, forestry and priceless water sources, whether in the form of numerous springs or the River Mirna, where the former female inhabitants of Boštanj used to catch fish using only their bare hands during the spawning season. Since not all the fish could immediately be used, they were dried for future use and used as ingredients to cook rich dishes. You can see a reenactment of this traditional chore by the Azaleja Society upon prior arrangement. After the tour you can buy apples, honey, and other products made from fruit and honey.

The geographical trail instructions

The trail begins at Boštanj Primary School, next to the large information board with the trail map. Here you will receive basic information and some refreshments. The trail takes you to the centre of Boštanj and starts descending just a few steps prior to the rectory towards the water spring below the church, which was in the old days used as a washing place in Boštanj called Vejar. The short circular path leading from Vejar will again take to the meadow next to the Parish church, where the information board next to the neatly arranged beehive offers



an insight into the importance of the fruit-growing and bee-keeping activities for Boštanj and the entire Lower Sava Valley, and especially to the indigenous apple variety called "Sevniška voščenska". The trail takes you past the Parish church and uphill past the cemetery and then towards the forest located above the settlement in the southwesterly direction. The information board, located just before the cart track enters the forest, draws your attention to the Yellow Azalea habitat, the only natural habitat of this type of shrub in Slovenia in addition to the smaller habitat located above Tržišče. The cart track will take you through the forest and to the top of the hill, which has been called "Gavge" ever since the Middle Ages testifying to the former location of the gallows. The trail then descends down the other side of the hill to Boštanj. You will then continue walking along the edge of the fields and descend down the slope covered with shrubs and forest to the Grahovica stream and the River Mirna, where fishing using just bare hands took place in the old times and where the sawmill and the first hydroelectric power plant were located. You can read about these activities on the information board. From here on, the trail continues through Dolenji Boštanj and ends back to where you started in Boštanj. The hike is varied, but undemanding.

After taking the Azalea Trail you can treat yourself to a lunch in one of the local pubs.

In the afternoon we suggest you to visit the nearby town Sevnica, which is most renowned for the majestic Sevnica Castle located above the River Sava. If you would like to take a holiday or engage in outdoor activities, you can visit the surrounding vineyard cottages. To make a reservation visit the www.tvz.si portal.

Additional information

Info: Janez Levstik, +386 51 636 246, www.dozivljaj.si,

dozivljaj@kstm.si